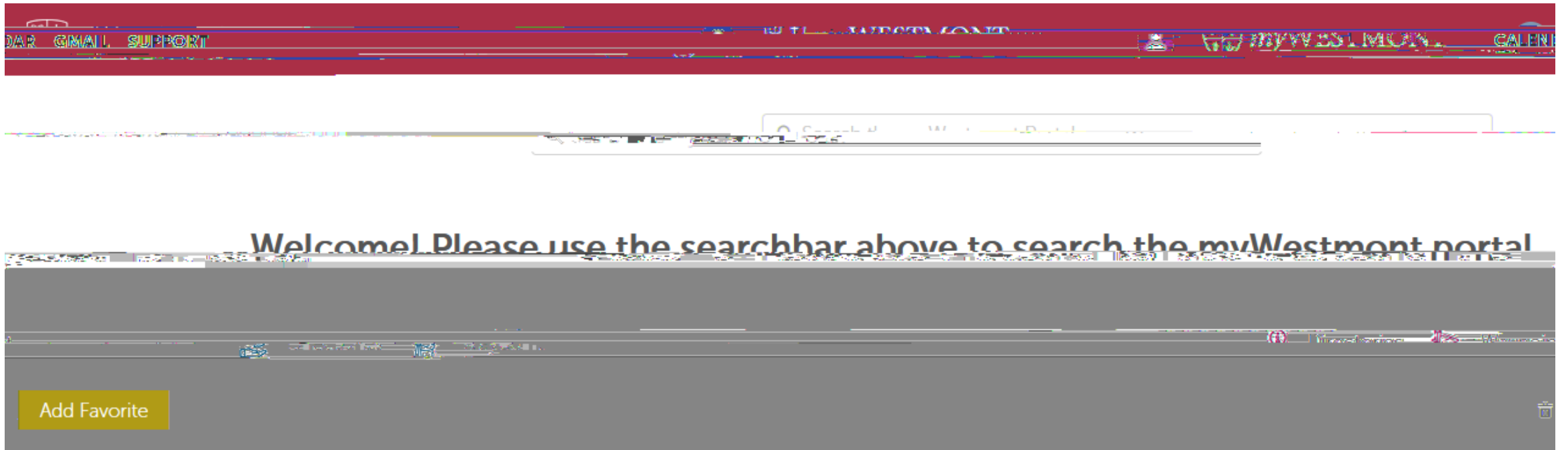


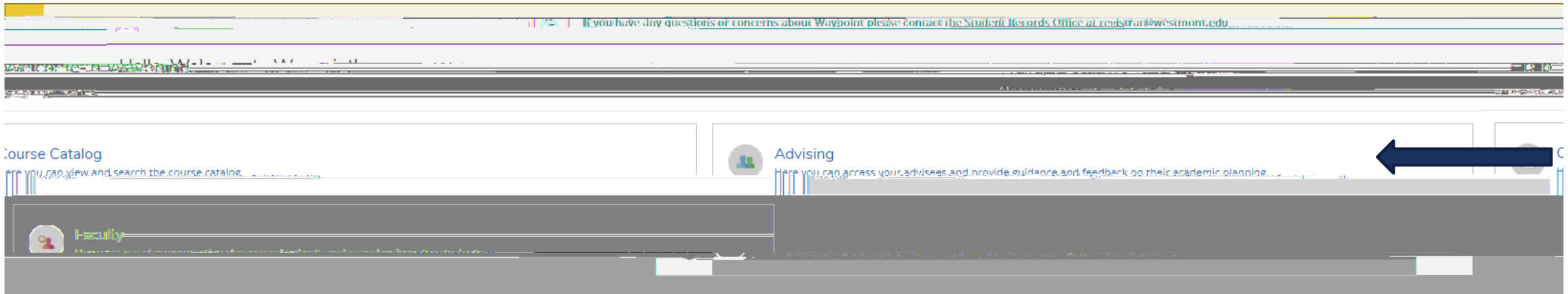


# NAVIGATE TO MY.WESTMONT.EDU



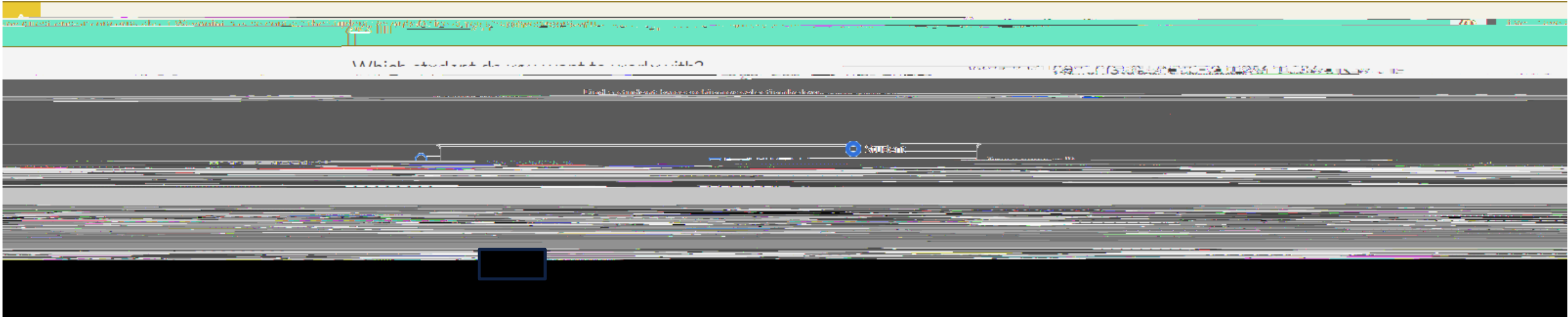
Navigate to my.westmont.edu and click on the Waypoint link

# WAYPOINT MAIN LANDING PAGE



This is the main landing page for Waypoint. Click on Advising.

# ADVISEE LANDING PAGE



Locate one of your advisees in the list and click on View Details.



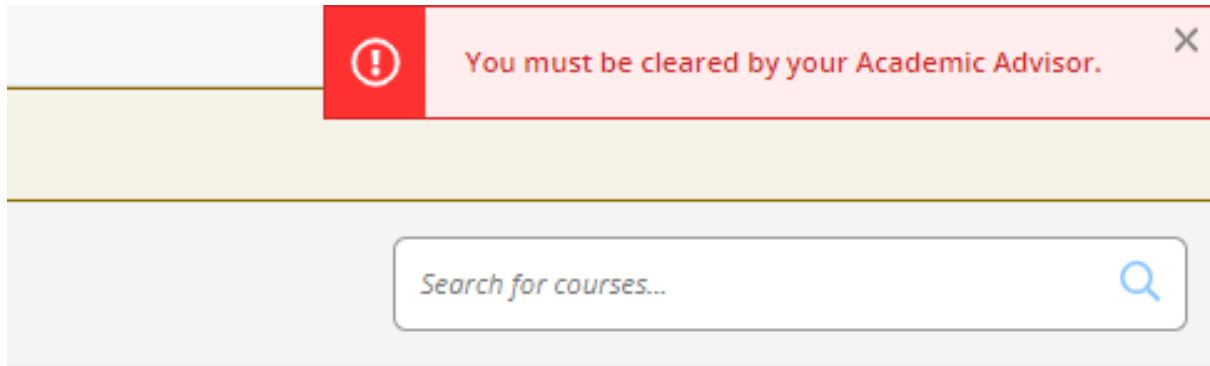
# ADVISEE HEADER PAGE DETAILS

The screenshot shows the 'Advisee Details' page for a student. At the top, there is a navigation bar with the email 'registrar@westmont.edu' and a contact instruction: 'If you have any questions or concerns about Waypoint please contact the Student Records Office at'. Below this is the page title 'Advisee Details' and a link '< Back to Advisees'. The main content area displays student information, including a profile picture (redacted with a black box), name, ID number, and Westmont email address. Three blue arrows point to these specific fields. At the bottom, there is a link 'View Full Profile'.

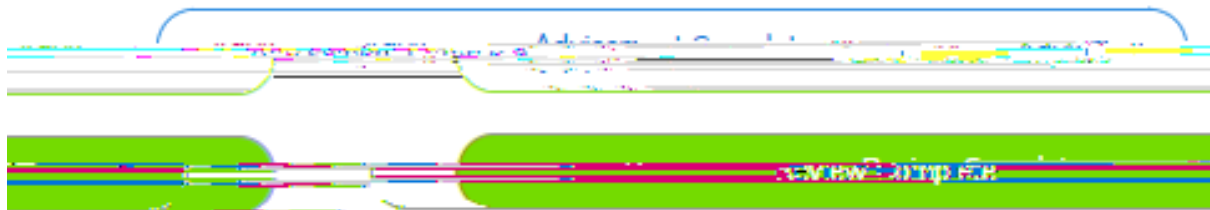
Note you can see the student's picture, name, ID number, and Westmont email address.

You can also see their declared majors and minors as well as their assigned advisors.

# ADVISEE HEADER PAGE DETAILS



Students needing advisor clearance will have a warning note in the upper right hand corner.



You can clear your advisee to register by clicking on the Advisee Complete button.

ATTMISEE LOWER PAGE DETAILS

# TEST SCORES DETAILS



The screenshot displays a student portal interface. At the top, a navigation bar includes links for 'Course Catalog', 'Notes', 'Plan Archive', 'Test Scores', 'Unofficial Transcript', 'Transfer Summary', 'Grades', 'Repetitions and Waivers', 'Graduation Application', 'Course Plan', 'Timeline', and 'Progress'. A 'Notifications' icon is visible on the right. Below the navigation bar, the 'Test Scores' section is active, showing a table of test scores. A blue arrow points to the 'Test Scores' link in the navigation bar. Another blue arrow points to a row in the table.

Test Type	Score	Test Date	Score	Score	Score
ACT Composite	27	7/27/10	ACT	6/17/11	670 / 300

Under Test Scores you can all of the SAT, ACT and Advanced Placement test scores received for the student.